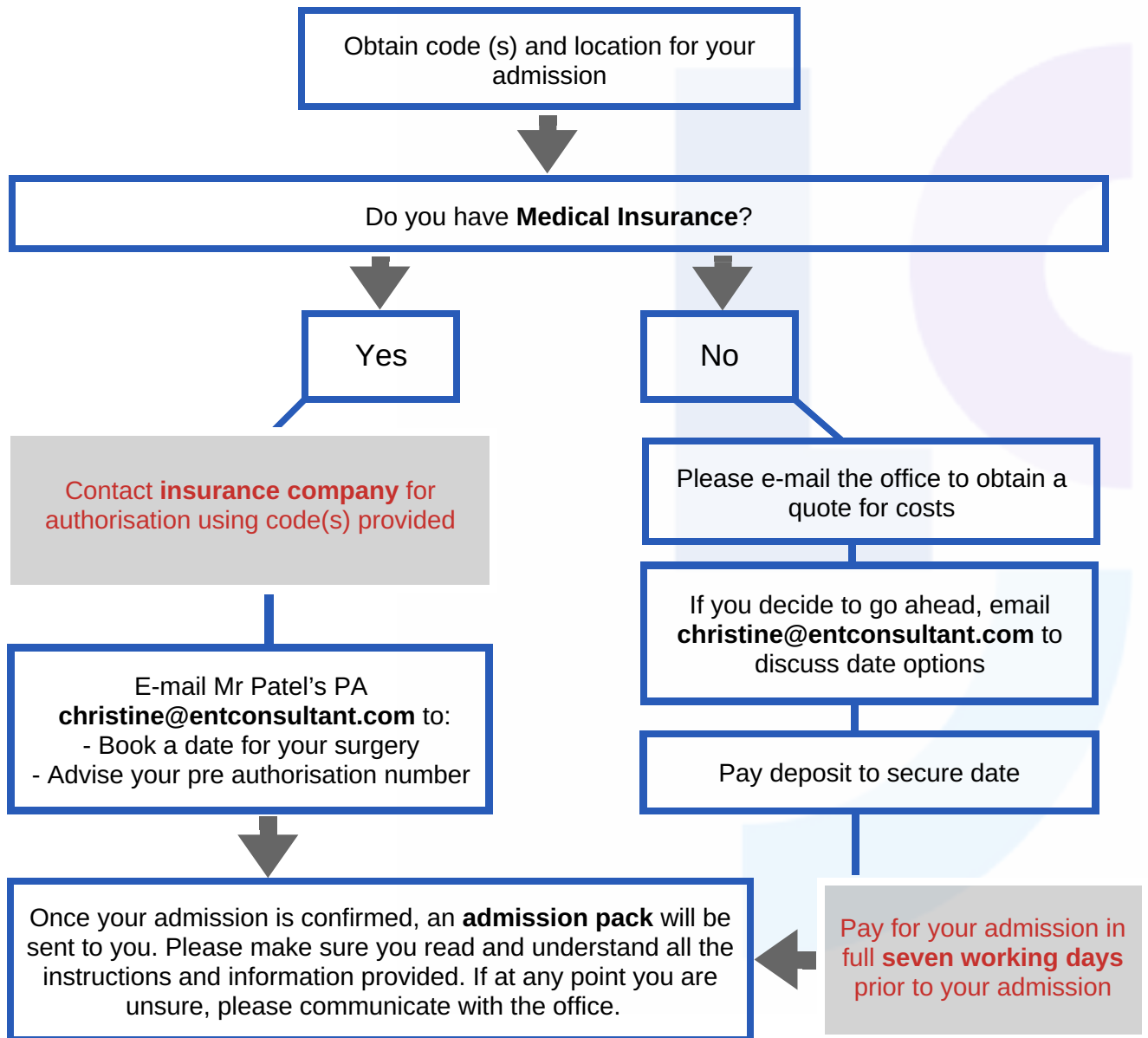


# PATIENT PATHWAY FOR SURGICAL OPERATIONS



## IMPORTANT PRE-ADMISSION ACTIONS

### 2 weeks before your admission

- Obtain all relevant Imaging studies for your admission (CT, MRI, etc)
- Bring it with you on the day of the surgery.
- Contact the office to inform of any changes to your medical condition.
- Communicate with admitting hospital for additional information (as required).

### On the day of your admission

- Make sure you are nil by mouth (no food or water) at least six hours before your operation.
- Bring any medication with you that you take regularly.
- Arrive at the Hospital at the time indicated in your admission pack.
- Bring all relevant results X-rays / CT / MRI etc. with you

**Failure to follow these actions may result in your procedure being cancelled**